



Employee Spotlight

Janet Hoscheid started at NVC/JVT in 1996 and has seen a plethora of changes throughout those years including the addition of internet and cell phone service. She has always worked in the billing department but, at her request, moved from the Groton office to Aberdeen in 2017.

Janet is a Groton Area High School and NSU alumni and worked at Bantz, Gosch & Cremer Law Firm and WEB Water before starting at NVC/JVT.

Along with her husband Pete, Janet has two daughters and seven grandchildren. They spend a lot of time with family and attending their grandkids' activities. Janet loves to bake, recently perfecting her sourdough starter, and enjoys planning vacations.

Janet loves her job and coworkers and says that's what makes coming to work every day so easy. We appreciate Janet's many years of service and dedication to NVC/JVT!



Grand Giveaway Winner

Congratulations to Shannon Johnson, who won a \$200 The Market on the Plaza gift card in our Grand Giveaway!

Wondering how to register? No problem, because there's no purchase or registration, just winners! Each month we randomly select one of our "grand" residential customers to win. Our next winner could be you!

AAHS Sponsored Pet

Our June Aberdeen Area Humane Society sponsored pet, 6-year-old mixed breed Scout, was adopted. Because she was adopted, we will happily donate \$250 to the AAHS.

Our May pet, Mya, is still available. You can find out more about Mya and other available pets at anewleashonlife.net or call the AAHS at 605-226-1200 to schedule a time to visit.



Protect Your Passwords

Keeping your personal finances and information secure is so important. We keep locks on our doors, secure money in the bank, and shred financial documents before we throw them out, but now, thieves don't even have to pick your locks to make off with your money. Which is why having a good strategy for strong passwords is essential.

Changing your passwords can be a real pain, but way worth it. Here are some essential do's and don'ts to stay secure online according to komando.com:

Do

Create a long password that's 12 to 16 characters.

Use a mix of letters, numbers and special characters or symbols. Throw in a range of upper and lowercase letters for extra protection.

Use a password manager for safe storage. It will also remember your passwords for you.

Use multi-factor authentication (at least two-factor) to make it harder for hackers to access your info.

If you think your password has been compromised, change it ASAP.

Don't

Save your passwords to your web browser. Others who use (or steal) your devices could access your info.

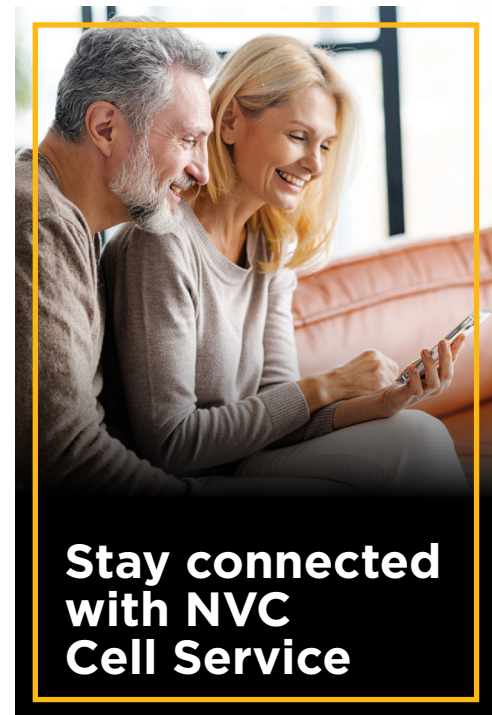
Use personal info when creating your password.

Use easy-to-guess sequences of numbers or letters.

Use the same password for multiple accounts.

Share your password with others.

Take the time to get organized, evaluate your passwords and come up with a good strategy for maintaining them and keeping them all secure.



**Stay connected
with NVC
Cell Service**

NVC Tent at Brown County Fair-New Location

Make sure to stop at the NVC tent during the Brown County Fair August 14-20. This year the NVC tent will be in a different location (see map at right) and will feature various forms of entertainment.

Stay tuned to this newsletter and our Facebook page for more updates. Also, watch for the Brown County Fair program this month for a final schedule.



NVC Managed WiFi

As today's technology continues to advance, almost every device in your home needs a solid Internet connection: computers, smart phones, tablets, TVs, and products like doorbells, lights, and security systems. Many people confuse the Internet and WiFi for good reason. The words are often used interchangeably.

The Internet is connected networks all over the world. WiFi is your personal wireless network within your home. A wireless connection is made possible using WiFi technology; specifically, by another device in your home called a router.

An older router is one potential cause of WiFi issues. WiFi technology has improved a lot recently, so if your router is a few years old, it won't work nearly as well as a new one.

If your router itself is not the problem, its location might be. For you to enjoy the best possible online experience, your router needs to be able to send out a strong signal to your wireless device. In general, the signal gets weaker the farther you are from it.

If possible, you should place the WiFi router on a table or a shelf. The ideal position is half-way between the floor and the ceiling.

The easiest way to get a strong WiFi signal throughout your home, and even in your yard, is by creating a bigger WiFi network.

If you are frustrated by the WiFi coverage in your home, there is an alternative available. Called a Mesh WiFi network, this technology combines a WiFi router with one or more satellites, which are small wireless devices you place in different rooms. The small size of our Managed WiFi router can be hidden about anywhere

These satellites communicate with the router and provide you with a strong WiFi signal everywhere in your home; even in your backyard.

Let us worry about your WiFi and connecting all your devices. Call today to find out more and to receive your first 3 months of Managed WiFi service FREE!

Falken & Hub Area Habitat for Humanity

NVC Sales Representative and Hub Area Habitat for Humanity President Shaun Falken is pictured in the middle while working on a project in Aberdeen installing new windows and siding. Shaun is pictured with Scott Jurgensen (left) and Mike Haynes (right).

If you'd like to volunteer on a future Habitat for Humanity project, you can reach Shaun at hubhabitat@nvc.net.



Paris 2024 Olympics



Get ready for some epic sporting events this summer. The Paris 2024 Olympics officially start on Friday, July 26 with the opening ceremony airing on NBC. This will be the first opening ceremony that does not take place in a

stadium, as it will be along the Seine river.

Many of the events will be held at iconic and historic destinations including; beach volleyball at the Eiffel Tower Stadium, tennis at Roland-Garros, equestrian at the Palace of Versailles, and fencing and taekwondo at the Grand Palais des Champs-Élysées.

The games actually start July 24, with rugby and soccer being played that day. Visit nbcolympics.com/full-schedule for a listing of all the events.



Get 10% off your services with our loyalty discount!

Call today to find out if you qualify.

GET IN TOUCH WITH NVC



SIGN UP FOR NVC'S MONTHLY NEWSLETTER AT [NVC.NET](https://nvc.net)

FOLLOW US



ABERDEEN

3211 7th Ave SE, Suite 102
Aberdeen, SD 57401

(605) 725-1000

Open Mon- Fri 8:30am-5:30pm

REDFIELD

1316 E 7th Ave
Redfield, SD 57469

(605) 475-1000

Open Wed 10am-4pm